

# HOLIDAY 2024

CREATIVE ♦ MC



Trends Lookbook



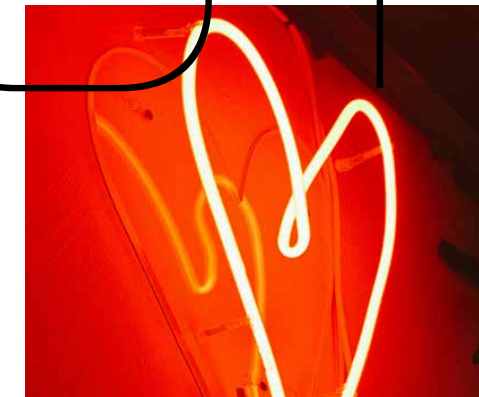
We see style as an ever-evolving journey, where the past shapes the present and sparks the future. Our latest lookbook explores the harmonious coexistence of these worlds, positioning your brand to provide a timeless and unforgettable escape from the everyday.



PAST.

PRESENT.

FUTURE.





# HOLIDAY 2024

Where is your brand's comfort zone?

Inspired by our collective yearning to break free from the world's pressures and daily grind, our Holiday 2024 Trends Lookbook takes you on a fantastical journey. We'll transport you from a retro-groovy past to a cosmic future, with a couple of sublime stops along the way.

ORBIT

PAGE 06

GROOVE

PAGE 18

EMBRACE

PAGE 30

EXHALE

PAGE 42

*82% of the products featured support minority communities, social causes, and/or the Earth.*



#### Eco-Friendly

Products that are beneficial or not harmful to the environment. Many of our partners are also members of 1% for the Planet.



#### Social Giveback

Brands that contribute a portion of profits to social causes and/or are committed to ethically sourced materials.



#### Underrepresented

Companies owned or led by an executive from an underrepresented community, including BIPOC, AAPI, LGBTQ+, and women.



#### More Colors

The product shown is in a color that reflects this trend but is also available in additional colors.



#### Price Point

Price ranges indicated are:

\$ = \$1-\$30

\$\$ = \$31-\$75

\$\$\$ = \$76-\$150

\$\$\$\$ = \$151+

#### Credits

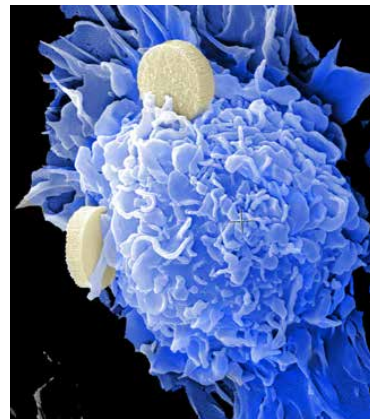
Creative direction and graphic design by Camilla Behrens in Los Angeles, CA. Photography by Dominik Kucera with Styling by Gabriela Zimova in Prague, Czechia. Other photography courtesy of Unsplash.



Soar to new galaxies with this visionary trend that takes style beyond the stars. Discover products that defy expectations and venture into uncharted realms, making a bold impact.

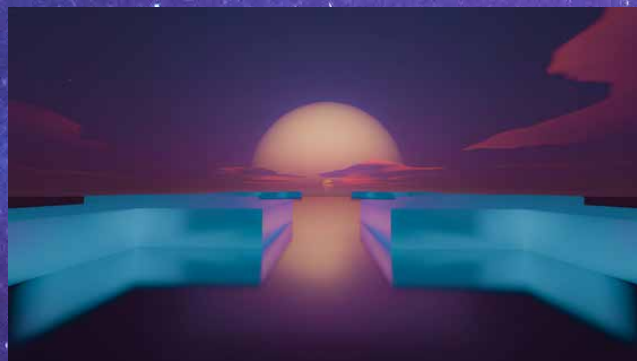


METEOR MIST

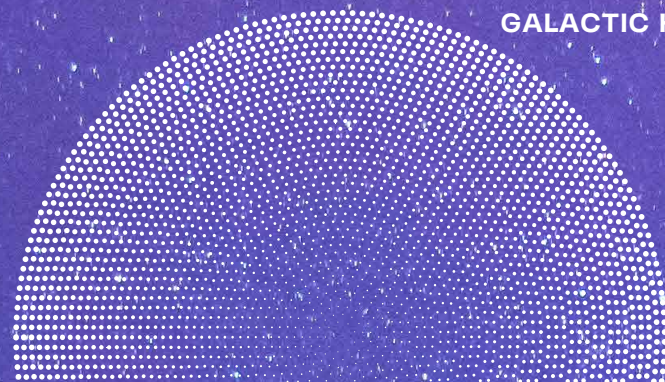


# ORBIT

COSMIC VOID



GALACTIC HALO



NEBULA BLUE

COSMIC  
VISIONARY  
FEARLESS



# HO 24 ORBIT



02



03



04



05



06

*"Innovative gifting  
is the ultimate power move!"*

LISA GRUZAS,  
BRAND STYLIST MANAGER



08



07

09



10



13



11



12



14

- 01 FOSSA APPAREL WOMEN'S HYBRID PUFFER | \$\$\$  
🌿 🍀
- 02 EVERYBODY.WORLD CUSTOM BLANKET | \$\$\$  
🌿 🍀 🌈
- 03 ASOBU INSULATED COOLER | \$  
🌿 🌈
- 04 ALLBIRDS MEN'S SNEAKERS | \$\$\$  
🌿 🍀 🌈
- 05 ASOBU 32 OZ COSMIC BOTTLE | \$\$  
🌿 🌈
- 06 ACEHIGH JUPITER POWERBANK | \$
- 07 BAGGU CARGO SHOULDER BAG | \$  
🌿 🍀 🌈
- 08 ACEHIGH PHEONIX 3-IN-1 CHARGER | \$\$
- 09 EDDIE BAUER WOMEN'S QUILTED VEST | \$\$  
🌿 🍀 🌈
- 10 COSTANZA PUFFER TOTE | \$
- 11 ASOBU BOTTLE WITH ELECTROLYTE POWDER STORAGE | \$\$  
🌿 🌈
- 12 SOCK101 RECYCLED TOTE | \$\$  
🌿 🍀 🌈
- 13 ANTIGUA APPAREL GOLF SHIRT | \$\$  
🌿 🌈
- 14 CUISINART RECHARGEABLE SALT, PEPPER & SPICE MILL | \$  
🌿



- 15 **PRODIR BIODEGRADABLE PEN** | \$  
🌱 🌿
- 16 **HIGH SIERRA CARRY-ON LUGGAGE** | \$\$\$\$  
🌱 🌿
- 17 **PATAGONIA ROLL TOP PACK** | \$\$\$\$  
🌱 🌿 🌿
- 18 **KASHWÉRE BEANIE** | \$\$  
🌱 🌿 🌿
- 19 **FOSSA APPAREL MEN'S HYBRID PUFFER** | \$\$\$  
🌱 🌿 🌿
- 20 **FELLOW 10 OZ LOWBALL TUMBLER** | \$  
🌱 🌿
- 21 **JBL WATERPROOF SPEAKER** | \$\$\$  
🌱 🌿
- 22 **SLOWTIDE QUICK DRY GOLF TOWEL** | \$  
🌱 🌿 🌿
- 23 **OHOM SELF-HEATING CERAMIC MUG & CHARGER** | \$\$\$  
🌱 🌿 🌿
- 24 **PRODIR MEDIUM NOTEBOOK** | \$  
🌱 🌿
- 25 **YIELD DOUBLE-WALL GLASSES** | \$\$  
🌱 🌿
- 26 **YIELD POUR OVER CARAFE** | \$\$\$  
🌱 🌿
- 27 **FLUIDSTANCE BALANCING BOARD** | \$\$\$\$  
🌱
- 28 **FOSSA APPAREL MEN'S REVERSIBLE JACKET** | \$\$\$  
🌱 🌿



*"We love swag that redefines what's possible."*

BIANCA SALDANA,  
BRAND STYLIST

# HO 24 ORBIT





SLEEK  
ORIGINAL  
BOLD



# HO 24 ORBIT

*"Step into tomorrow  
with products designed today."*

CLAUDIA SANCHEZ,  
BRAND STYLIST ASSISTANT



29



30



31



32



33

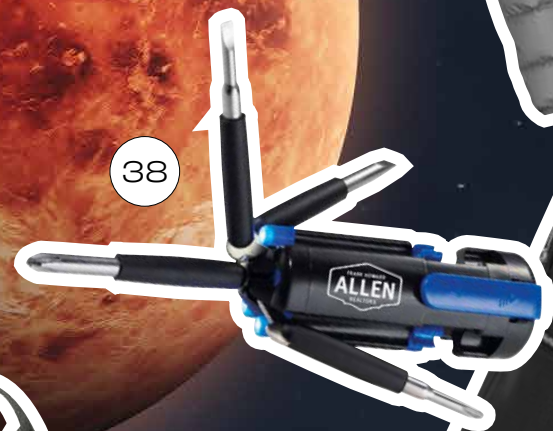


34

36



35



38



37



39

40



41

- 29 SAMSONITE WHEELED DUFFEL | \$\$\$  
🍃 🍷
- 30 LUX AND NYX ORIGAMI BELT BAG | \$\$  
🍷 🍷 🍷 🍷
- 31 CLEER NOISE-CANCELLING EARBUDS | \$\$\$\$  
🍷
- 32 BIRDEYE REMOTE CONTROL DRONE WITH CAMERA | \$\$\$
- 33 OUTDOOR RESEARCH WOMEN'S HOODED DOWN VEST | \$\$\$  
🍷 🍷 🍷
- 34 SPECTOR & CO. TECH CASE | \$  
🍷 🍷 🍷
- 35 OUTDOOR RESEARCH DOWN JACKET | \$\$\$  
🍷 🍷 🍷
- 36 SPECTOR & CO. BOTTLE WITH CUP | \$\$  
🍷 🍷 🍷
- 37 PARAVEL MINI FOLD-UP BACKPACK | \$\$  
🍷 🍷 🍷
- 38 PENTA 6-IN-1 MULTIUSE TOOL | \$
- 39 THE NORTH FACE MEN'S DOWN JACKET | \$\$\$  
🍷 🍷 🍷
- 40 THE GOODS RECYCLED FELT NOTEBOOK | \$  
🍷
- 41 SPECTOR & CO. VANGUARD BACKPACK | \$\$\$  
🍷 🍷



- 42 OGIO RECYCLED BACKPACK | \$\$  
🌱 ♡ 🌿
- 43 HEXA REVERSIBLE SHERPA VEST | \$\$\$  
🌱 ♡ 🌿 🌿
- 44 OUT OF THE OCEAN RECYCLED XL SHOPPER | \$  
🌱 ♡ 🌿
- 45 SEGWAY ELECTRIC KICK SCOOTER | \$\$\$\$
- 46 RUPT WIRELESS SPEAKER & CHARGER KIT | \$\$\$  
🌱 ♡
- 47 VOCHILL STEMMED WINE CHILLER | \$\$\$  
🌱 🌿 🌿
- 48 SAMSONITE WINDGUARD UMBRELLA | \$\$  
🌱 ♡
- 49 THERABODY SMART GOGGLES | \$\$\$\$
- 50 LYNN & LIANA ACRYLIC SERVING TRAY | \$\$\$\$  
🌱 🌿 🌿
- 51 SOCK101 CUSTOM HIGHTOP SNEAKERS | \$\$\$  
🌱 🌿
- 52 VSSL INSULATED FLASK | \$\$\$  
🌱
- 53 SOMA 17 OZ GLASS WATER BOTTLE | \$  
🌱 ♡ 🌿
- 54 LYNN & LIANA CERAMIC COASTERS (SET OF 4) | \$\$  
🌱 🌿 🌿
- 55 STORMTECH MEN'S KNIT FLEECE JACKET | \$\$\$  
🌱 🌿 🌿



*"Take your brand to a new realm with bold swag choices."*

ELLIOT GROSS,  
JUNIOR BRAND STYLIST

# HO 24 ORBIT



Revisit the comfort of a beloved era with a fresh twist. This trend fuses the unfettered self-expression of the '70s with sleek, modern silhouettes that feel right at home in 2024.

PSYCHEDELIC MINT



# GROOVE

MOSSY GROVE



MELLOW MOCHA



DISCO FLAME

RETRO  
FREE  
FUNKY



# H&A GROOVE



01



04



06



03



05



07



08



09



12



10



11



13



14

*"Nostalgic vibes can turn swag into timeless treasures."*

ASHLEY SEM,  
JUNIOR BRAND STYLIST

- 01 LE BON SHOPPE BOYFRIEND SOCKS | \$  
🌿 🌈
- 02 FOOD HUGGERS REUSABLE SILICONE BAG | \$  
🌿 🌈
- 03 YIELD GLASS INCENSE HOLDER AND INCENSE | \$  
🌿 🌈
- 04 BAMBOO AROMATIC OIL DIFFUSER | \$\$\$  
🌿
- 05 BUSINESS & PLEASURE RETRO COOLER | \$\$\$\$  
🌈
- 06 CABLE KNIT BEANIE | \$  
🌈
- 07 BEAST MINI BLENDER | \$\$\$  
🌿 🌈
- 08 BUSINESS & PLEASURE RETRO BOTTLE OPENER | \$
- 09 7-IN-1 GAME SET | \$\$
- 10 EKSTER LEATHER LAPTOP SLEEVE | \$\$  
🌿 🌈
- 11 FELLOW 12 OZ WINE TUMBLER | \$  
🌿 🌈
- 12 ASOBU COLD BREW | \$\$  
🌿 🌈
- 13 FELLOW ELECTRIC KETTLE | \$\$\$  
🌿 🌈
- 14 BUSINESS & PLEASURE HOLIDAY BEACH BLANKET | \$\$\$  
🌈



- 15 MOMENT FANNY SLING | \$\$  
🌿 🌈
- 16 NOMADIX BANDANA TOWEL | \$\$  
🌿 🌈
- 17 HEXA PUFFY TOTE | \$\$  
🌿 🌈
- 18 OHOM UNITY TEA COLLECTION | \$\$\$\$  
🌿 🌈
- 19 HEXA REVERSIBLE SHERPA JACKET | \$\$\$\$  
🌿 🌈
- 20 HERITAGE SUPPLY LOG CARRIER | \$\$\$  
🌿 🌈
- 21 DAY OWL SLIM PRO BACKPACK | \$\$\$\$  
🌿 🌈
- 22 ORBITKEY LEATHER KEY ORGANIZER | \$\$  
🌈
- 23 MOLESKIN TRAVELLER'S JOURNAL | \$\$  
🌿 🌈
- 24 HIGH CAMP PARKSIDE WINE FLASK | \$\$\$  
🌿 🌈
- 25 JADYN 6-PIECE PACKING CUBE SET | \$  
🌈
- 26 GARDEN REPUBLIC BONSAI PLANTING KIT | \$\$  
🌿
- 27 ILIVE RETRO BLUETOOTH SPEAKER | \$\$\$
- 28 OUT OF THE WOODS TOTE | \$  
🌿 🌈



# HO 24 GROOVE

*"70s design delivers a feel-good look vibe!"*  
 IE TRAN,  
 JUNIOR BRAND STYLIST





COLLECTIVE  
TIMELINESS  
VINTAGE





# HO 24 GROOVE



29



30



31



32



33



34



35

36



37

39



38



40



41



42



*"Revisit the past with a contemporary twist."*

MENA TRIGUEROS,  
SENIOR BRAND STYLIST

- 29 NUMO RIPSTOP POUCH | \$
- 30 CORK YOGA MAT | \$
- 31 RAAKA CHOCOLATE GREEN TEA CRUNCH BAR | \$
- 32 PATAGONIA WATERPROOF DUFFEL | \$\$\$\$
- 33 CAPAMERICA RECYCLED KNIT BEANIE | \$\$
- 34 BAMBOO GEL BALLPOINT PEN | \$
- 35 PARAVEL MINI TOTE | \$\$\$\$
- 36 WOLVERINE KNIT CAP | \$
- 37 CUSTOMIZABLE RECORD COASTERS (SET OF 4) | \$
- 38 CONSCIOUS STEPS LEOPARD SOCKS | \$
- 39 SPICEWALLA GRILL & ROAST SEASONING (3-PACK) | \$
- 40 STANLEY 40 OZ TRAVEL TUMBLER | \$\$
- 41 PORT AUTHORITY RAGLAN FLEECE | \$\$
- 42 PENDLETON THROW | \$\$\$\$



- 43 FESTIVE BAMBOO CHARCUTERIE BOARD | \$\$\$  
🌿
- 44 RAEN OPTICS SUNGLASSES | \$  
🌿🌈
- 45 UNITED BY BLUE FANNY PACK | \$\$\$  
🌿🌈
- 46 RETRO SUNGLASSES | \$  
🌿🌈
- 47 VSSL POUR OVER BREW SET | \$\$  
🌿🌈
- 48 BAGGU SMALL CARRY-ON | \$\$  
🌿🌈
- 49 SATSUMA BENTO BOX | \$  
🌿🌈
- 50 PARAVEL MINI VANITY CASE | \$\$  
🌿🌈
- 51 SOCK101 BRANDED BOOTS WITH FUR | \$\$\$  
🌿🌈
- 52 WELD MFG CORDUROY CAP | \$  
🌈
- 53 CUSTOM PICKLEBALL SET WITH BALLS | \$\$  
🌈
- 54 ANECDOTE CANDLES CUSTOM JAR | \$\$  
🌿🌈
- 55 SWEETER CARDS CUSTOM CHOCOLATE CARD | \$  
🌿🌈
- 56 KOBO CANDLES HOLIDAY COLLECTION | \$\$  
🌿🌈



# HO 24 GROOVE

*"A throwback look will celebrate your brand's originality."*

DOMINIQUE YANG,  
JUNIOR BRAND STYLIST



Discover the seamless fusion of old-world splendor and modern comfort, where timeless romance embraces cozy relaxation. This trend is where elegance and serenity coexist blissfully.

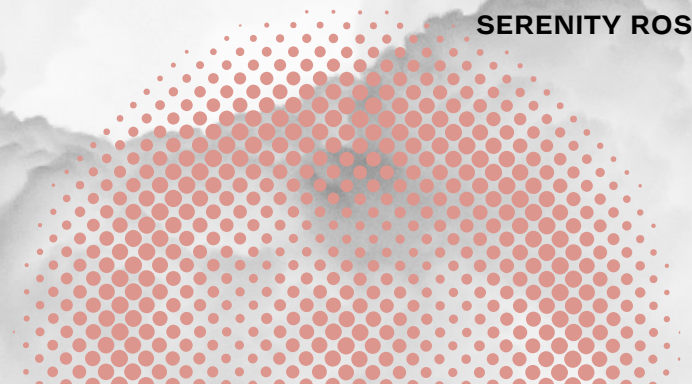
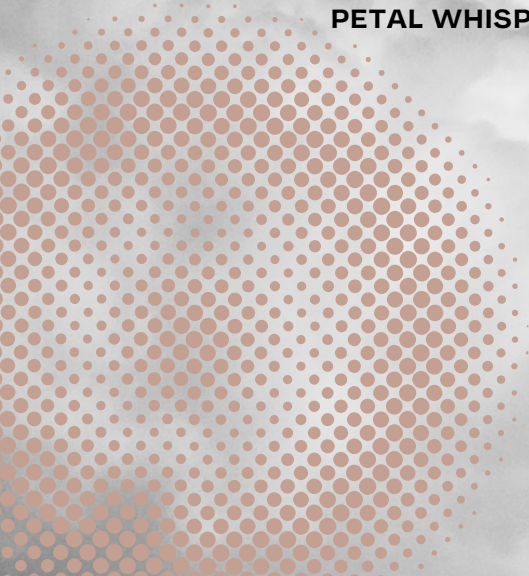


**VICTORIAN LACE**



# EMBRACE

**PETAL WHISPER**



**SERENITY ROSE**



**GENTLE MIST**

CUDDLE  
CLASSIC  
REFUGE

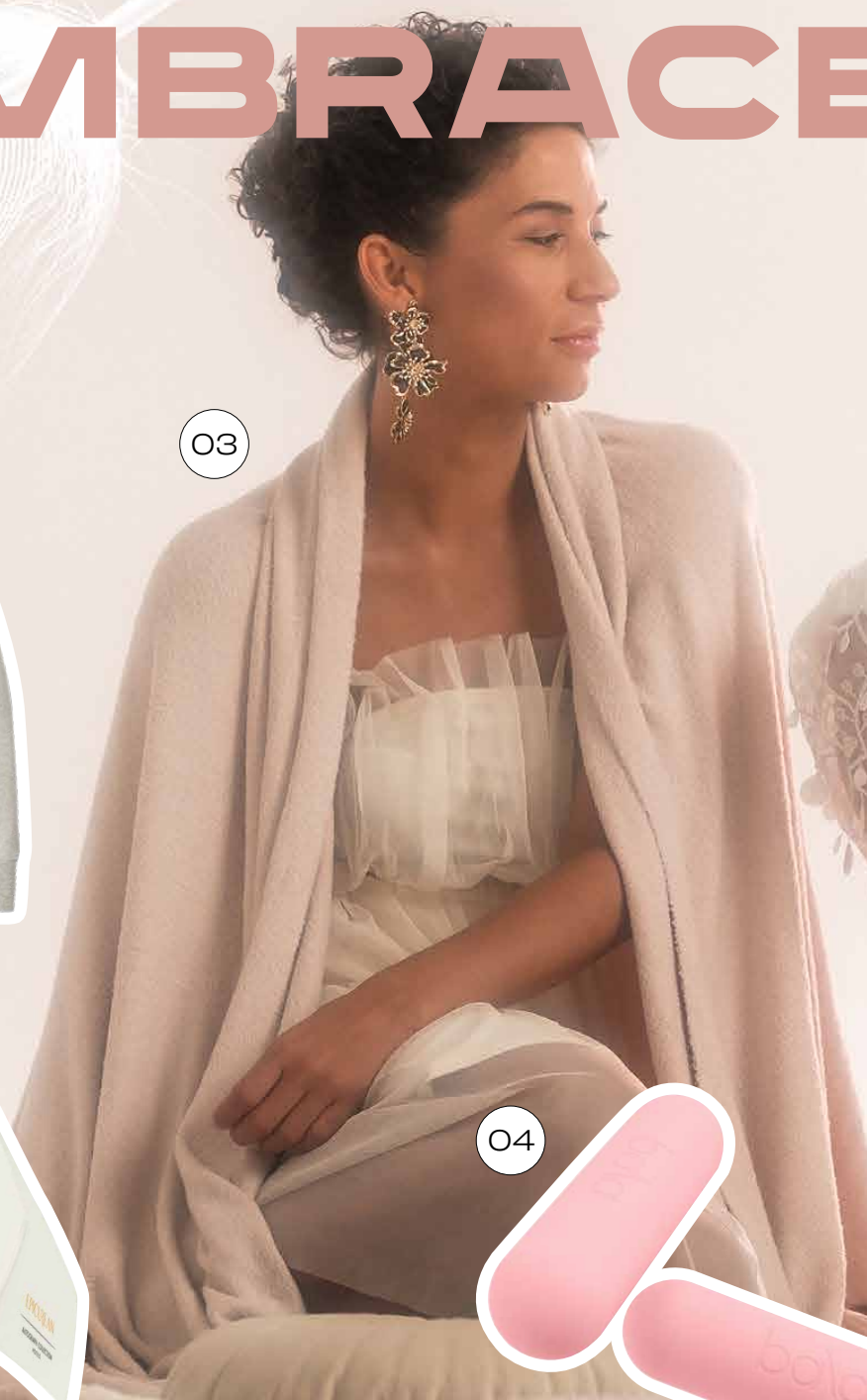


# HO 24 EMBRACE

01



03



04



05



06



07



09



11



10



12



13



14



*"Bridgerton has made this vibe ultra-modern."*

MARY HAAS,  
SALES AND OFFICE ADMINISTRATOR

- 01 BELLA+CANVAS UNISEX FLEECE SWEATSHIRT | \$\$  
🌱 ♡ 🌿
- 02 39" RECYCLED FOLDING UMBRELLA | \$  
🌱 🌿
- 03 KASHWÉRE WEEKEND SHAWL | \$\$\$  
🌱 🌿 🌿
- 04 BALA EXERCISE BARS | \$\$  
🌱 🌿 🌿
- 05 DAGNE DOVER RECYCLED DOPP KIT | \$\$  
🌱 🌿 🌿
- 06 AVIANA RECYCLED 17 OZ TUMBLER | \$  
🌱 🌿
- 07 DAY OWL MINI DAYPACK | \$\$\$  
🌱 ♡ 🌿
- 08 ELEGANT LODGE THROW BLANKET | \$\$
- 09 DECADENT HOLIDAY TEA CAKES | \$
- 10 CAPAMERICA KNIT POM-POM CAP | \$  
🌿
- 11 ZUNI SPORTSWEAR OVERSIZED TEE | \$\$\$  
🌱 🌿 🌿
- 12 CLEER BLUETOOTH HEADPHONES | \$\$\$\$  
🌱 🌿
- 13 CLOUD NINE SHEEPSKIN SLIPPERS | \$\$\$  
♡ 🌿 🌿
- 14 BAGGU NYLON CRESCENT BAG | \$\$  
🌱 ♡ 🌿 🌿



- 15 EVERLANE RECYCLED SWEATPANTS | \$\$\$  
🌱 ♻️ 🌿
- 16 GOLDE CACAO TURMERIC LATTE BLEND | \$\$  
🌱 🌿
- 17 FALCON ENAMELWEAR 3-PINT JUG | \$\$  
🌿
- 18 KARST WOODLESS GRAPHITE PENCILS | \$  
🌱
- 19 KASHWÉRE SIGNATURE ROBE | \$\$\$\$  
🌱 🌿 🌿
- 20 FELLOW 12 OZ DOUBLE-WALL CERAMIC MUG | \$  
🌱 🌿
- 21 HEDLEY & BENNET OVEN MITTS | \$  
🌱
- 22 KASHWÉRE COLOR BLOCK THROW | \$\$\$\$  
🌱 🌿 🌿
- 23 KASHWÉRE HEAD WRAP | \$\$  
🌱 🌿 🌿
- 24 KASHWÉRE DREAM PILLOW | \$\$\$  
🌱 🌿 🌿
- 25 GOT BAG LARGE MOON BAG | \$\$  
🌱 ♻️ 🌿
- 26 OHOM UVIO SELF-PURIFYING WATER BOTTLE | \$\$\$  
🌱 🌿 🌿
- 27 HAMILTON BEACH COMPACT PET AIR PURIFIER | \$\$\$
- 28 FELLOW 10 OZ LOWBALL TUMBLER | \$\$  
🌱 🌿



# HO 24 EMBRACE

*"We can't resist timeless charm and contemporary ease."*

MIRA PETERSON,  
MARKETING MANAGER





SERENE  
COOZY  
REFINED





# HO 24 EMBRACE



29

31

35

40

41

36

39

42

38

37

34

32

33

30

*"Elegance and relaxation are blissfully entwined."*

MELISSA MILLER,  
DIRECTOR OF BRAND SERVICES

- 29 PORT AUTHORITY COZY FLEECE BLANKET | \$  
🍃🧡🌈
- 30 JADYN TOILETRY BAG | \$  
🍃🌈
- 31 PROSPERITY CANDLE LAVENDER GIFT SET | \$\$\$  
🍃🧡🌸
- 32 KASHWÉRE SPA SLIPPERS | \$\$\$  
🍃🌸🌈
- 33 SWEETER CARDS GRATITUDE CHOCOLATE GIFT CARD COLLECTION | \$  
🌈
- 34 LATHER REFRESH KIT | \$
- 35 NIKE BOMBER JACKET | \$\$\$  
🍃🧡🌈
- 36 ONSEN TOWEL BATH ROBE | \$\$\$\$  
🌈
- 37 KASHWÉRE WINDOW PANE THROW | \$\$\$\$  
🍃🌸🌈
- 38 OHOM SELF-HEATING POT SET | \$\$\$  
🍃🌸🌈
- 39 PORT AUTHORITY CUFFED BEANIE | \$  
🌈
- 40 OHOM UVIO SELF-PURIFYING WATER BOTTLE | \$\$\$  
🍃🌸🌈
- 41 KASHWÉRE TRAVEL SET | \$\$\$  
🍃🌸🌈
- 42 THE NORTH FACE UNISEX FLEECE JACKET | \$\$\$\$  
🍃🧡🌈



- 43 PORT AUTHORITY COZY FLEECE HOODIE | \$  
🍃❤️🌈
- 44 SLEEP AND RELAXATION GIFT SET | \$\$\$
- 45 PORT AUTHORITY COZY FLEECE BEANIE | \$  
🍃❤️
- 46 TENTREE ORGANIC COTTON CABLE BLANKET | \$\$\$  
🍃🌈
- 47 RAINS TOTE BAG MINI | \$\$\$  
🍃🌈
- 48 KOBO CANDLES DECK THE HALLS TUMBLER | \$\$  
🍃🌸🌈
- 49 MARINE LAYER SIGNATURE LINED BLANKET | \$\$\$  
🍃❤️
- 50 PORT & COMPANY WOMEN'S TIE-DYE SWEATSHIRT | \$\$  
🍃❤️🌈
- 51 W&P SILICONE SLEEVE WINE GLASSES | \$  
🍃🌈
- 52 VILA RECYCLED TOTE | \$  
🍃❤️🌈
- 53 SAVOR FOLIO DOCUMENT ORGANIZER | \$\$  
❤️🌸🌈
- 54 MARINE LAYER QUILTED PUFF SLEEVE SWEATER | \$\$\$  
🍃❤️🌈
- 55 TERRA THREAD FAIRTRADE WORK TOTE | \$\$  
🍃❤️🌈



# HO 24 EMBRACE

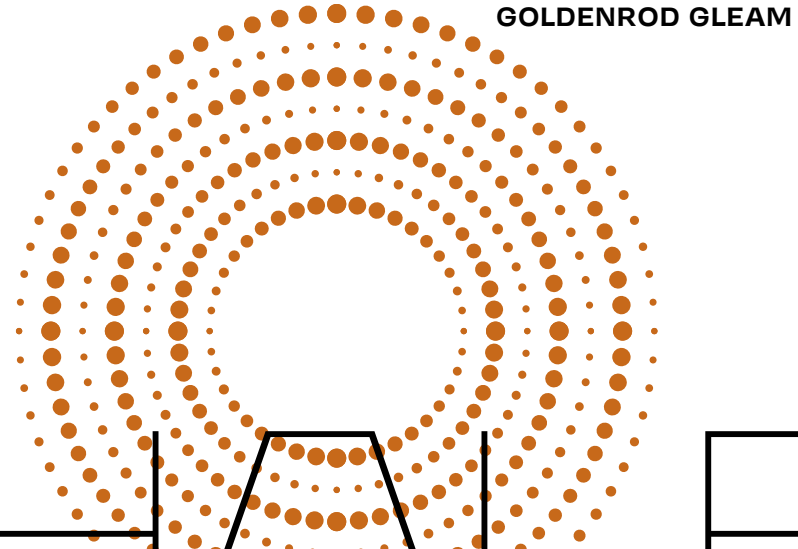
*“Express gratitude through nurturing swag choices.”*

JACKIE GREGOIRE,  
SENIOR BRAND STYLIST



Drawing inspiration from the sophistication of a London late-night club, this trend goes down like your favorite cocktail—perfectly balanced, effortlessly chic, and sure to soothe the soul.

E X H A L E



**GOLDENROD GLEAM**

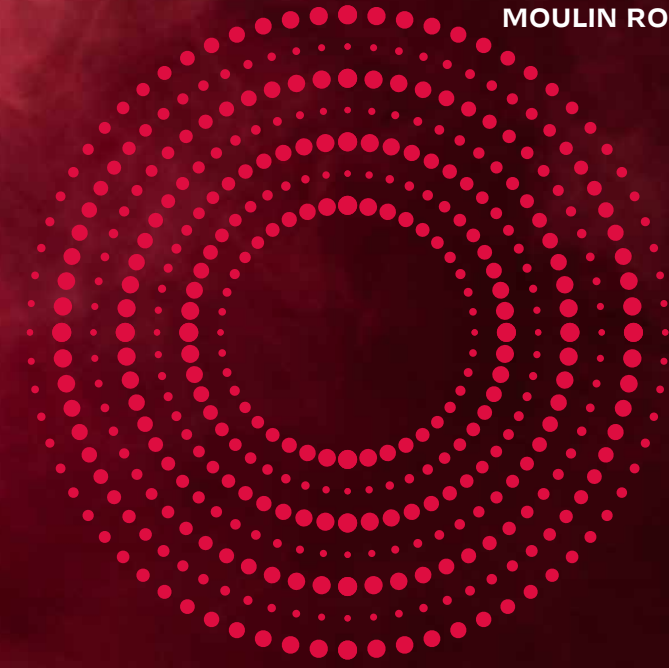


**WHISKEY BARREL**



**SADDLE SPICE**

**MOULIN ROUGE**



UNWIND  
ESCAPE  
LOUNGE



# NO 24 EXHALE

*"Refined and ready to mix a little magic into your evening."*

KAELI TAPNIO,  
JUNIOR BRAND STYLIST



01



03



04



05



06



07



09



08



10



12



13



11



14

- 01 AGED & INFUSED  
DIY INFUSION COCKTAIL KIT | \$\$
- 02 LUX AND NYX  
ORIGAMI MINI BAG | \$\$\$  
🍀 🍷 🍸 🍹
- 03 CRAIGHILL  
CARD CASE | \$\$\$  
🍷 🍸
- 04 A BAR ABOVE  
COCKTAIL SHAKER SET | \$\$  
🍷 🍸
- 05 BITE-SIZED COOKIES  
IN A MASON JAR | \$
- 06 TOSCANA BARISTA  
SERVING TRAY | \$\$  
🍷
- 07 A BAR ABOVE  
WINE OPENER | \$  
🍷
- 08 CARHARTT BACKPACK  
20-CAN COOLER | \$\$  
🍷 🍸 🍹
- 09 EVERLANE FLEECE-LINED  
OVERSHIRT | \$\$\$  
🍷 🍸 🍹
- 10 HAND-ETCHED LIQUOR BOTTLE  
WITH 2 GLASSES | \$\$\$  
🍷
- 11 CUISINART  
PORTABLE GAS GRILL | \$\$\$  
🍷
- 12 BREVITÉ  
LAPTOP BACKPACK | \$\$\$  
🍷 🍸 🍹
- 13 12-PIECE CHOCOLATE  
GIFT SET | \$  
🍷
- 14 CHOCOLATE INN  
CHOCOLATE BARS | \$  
🍷



- 15 ROOTS73 MITTENS | \$\$  
🌱🌿
- 16 FALCON ENAMELWARE FRUIT BOWL | \$\$\$  
🌿
- 17 DESK PLANTS HOLIDAY TREE | \$\$  
🌱🌿
- 18 EKSTER VEGAN LEATHER SMART WALLET | \$\$\$  
🌿🌿
- 19 CAPAMERICA PREMIUM KNIT POM-POM CAP | \$  
🌿
- 20 HIGH CAMP 12.7 OZ INSULATED FLASK | \$\$\$  
🌿🌿
- 21 HEATHMADE REMEDY BALM | \$  
🌿🌿🌿
- 22 DILO HOME REED DIFFUSERS | \$\$  
🌿🌿
- 23 CARHARTT THERMAL-LINED JACKET | \$\$\$  
🌿🌿🌿
- 24 GILDAN FLEECE STADIUM BLANKET | \$  
🌿🌿🌿
- 25 COOKIE BUSINESS CARD BOX | \$  
🌿🌿🌿
- 26 KINTO BREWER STAND SET | \$\$\$\$  
🌿🌿
- 27 KASHWÉRE WAFFLE WEAVE THROW | \$\$\$\$  
🌿🌿🌿
- 28 HIBEAR 32 OZ ADVENTURE FLASK | \$\$\$  
🌿🌿🌿



*"Sip on sophistication with products that capture the essence of a speakeasy."*

TATIANA GONZALES,  
BRAND STYLIST SUPPORT LEAD

# HO 24 EXHALE







RELEASE  
MOOD  
MYSTIQUE





# NO 24 EXHALE

*"Every item is a cocktail of style that soothes the soul."*

ELLIOT GROSS,  
JUNIOR BRAND STYLIST



29

31

33

35

40

41

30

34

36

39

42

37

38

32

- 29 MIDNIGHT KITCHEN BOTTLE & CAN OPENER | \$
- 30 LITTLE RIVER LEATHER DUFFEL BAG | \$\$\$\$
- 31 NIXON STAINLESS STEEL WATCH | \$\$\$\$
- 32 LOWLANDS WHISKEY FLIGHT TASTING SET | \$\$\$
- 33 PARKER CLAY CROSSBODY PHONE BAG | \$\$\$
- 34 SERENE DIFFUSER WITH LED LIGHTS | \$\$
- 35 QUINCE ORGANIC COTTON CREW SWEATER | \$\$\$
- 36 HEXA PUFFY LAPTOP SLEEVE | \$\$
- 37 BICYCLE PLAYING CARDS GIFT SET | \$
- 38 NUMO DOPP KIT | \$
- 39 LAST CRUMB COOKIE COLLECTION | \$\$\$
- 40 PARAVEL WEEKENDER TOTE | \$\$\$\$
- 41 SPORT-TEK HEAVYWEIGHT HOODED SWEATSHIRT | \$\$
- 42 STAYCOOLNYC HOODIE | \$\$\$



- 43 YIELD GLASS FRENCH PRESS AND 6 OZ GLASS MUGS (SET OF 2) | \$\$\$  
🌿 🌈
- 44 RECYCLED PUFFER SLING BACKPACK | \$\$  
🌿 🌈
- 45 PENDLETON SOCKS | \$  
🌿 🌈
- 46 CHELSEA CHENILLE THROW | \$\$  
🌈
- 47 SUGAR & SPICE GIFT SET | \$\$
- 48 YIELD GLASS MUGS (SET OF 2) | \$\$  
🌿 🌈
- 49 UINTA DESIGN WINE TOTE | \$\$  
🌿 🌈
- 50 MOMENT EVERYTHING TECH TOTE | \$\$\$  
🌿 🌈
- 51 CUSTOMIZABLE COASTERS (SET OF 4) | \$  
🌈
- 52 POKETO PROJECT PLANNER | \$\$  
🌿 🌈
- 53 VISKI TEQUILA GLASS | \$\$  
🌿 🌈
- 54 PRANZO LUNCH BAG COOLER WITH UTENSILS | \$\$\$  
🌈
- 55 PORT AUTHORITY PACKABLE PUFFER | \$\$  
🌿 🌈
- 56 PARKER CLAY LEATHER WINE TOTE | \$\$  
🌿 🌈
- 57 BRANDED SILICONE ICE MOLDS | \$  
🌈



*"Staying true to your brand doesn't mean losing the fun factor!"*

GLENN PATTON,  
MARKETING DIRECTOR

# NO 24 EXHALE





# GIFT SETS



## THOUGHTFULLY CURATED

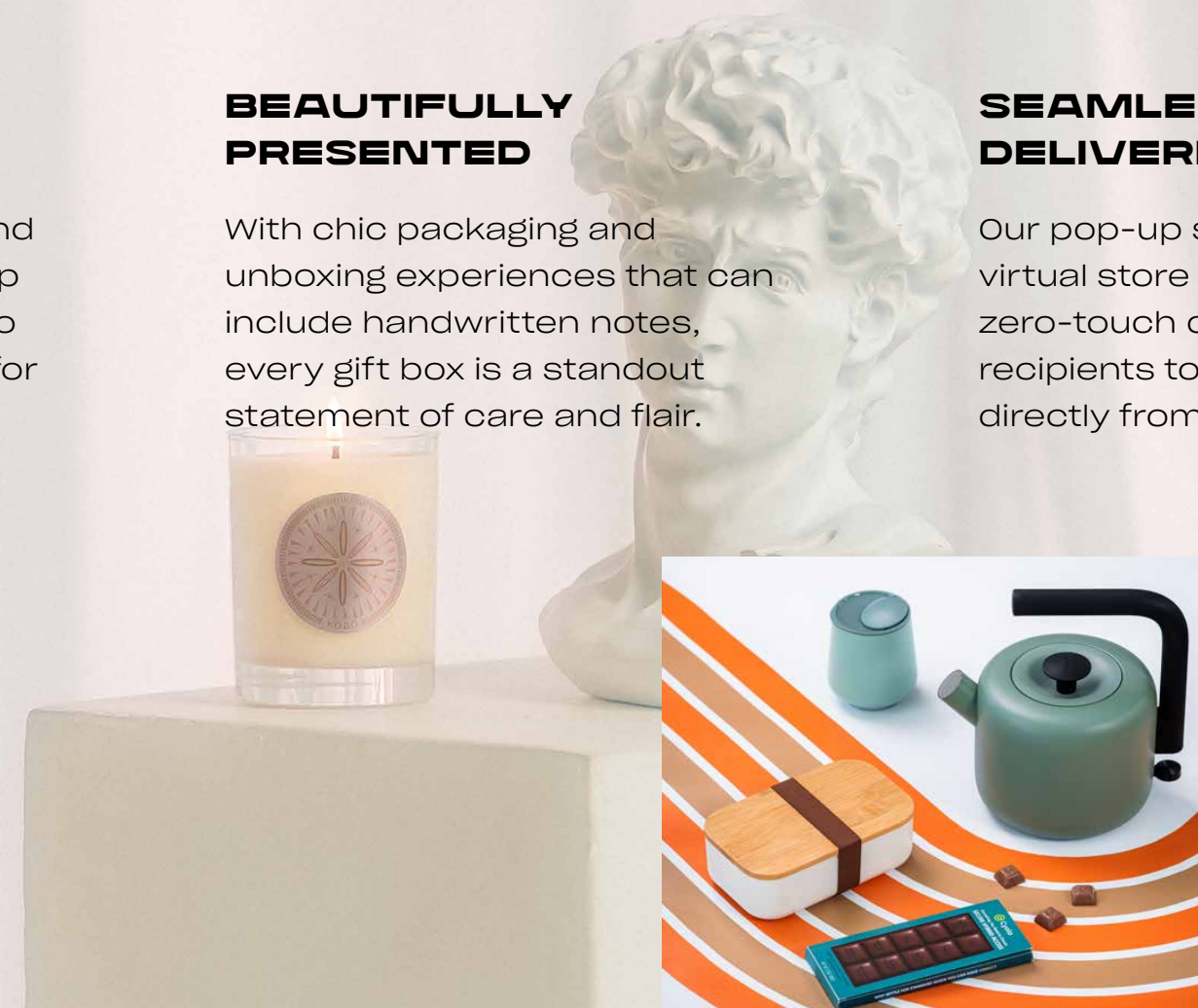
Sourcing all things on-trend and on-brand, we team up with top suppliers and retail partners to create stunning experiences for your entire gift list.

## BEAUTIFULLY PRESENTED

With chic packaging and unboxing experiences that can include handwritten notes, every gift box is a standout statement of care and flair.

## SEAMLESSLY DELIVERED

Our pop-up shop and other virtual store options provide zero-touch delivery, allowing recipients to enter shipping info directly from a link!





# ORBIT GIFT SETS

## BRAND SPOTLIGHT

### OHOM

\$\$-\$\$\$\$



Make your holiday gifts ooze quality with OHOM. Their passion is to handcraft ceramics that transform the mundane into the delightful. With a blend of aesthetic design, functionality, and cutting-edge technology, OHOM strives to perfect the harmony between form and function.

## NEBULA NIRVANA

Ohom's Ui 3 self-heating technology keeps beverages at just the right temperature and devices charged from lift-off to landing. Completing this other-worldly duo, Kashwére's luxurious throw is machine washable and available in many gorgeous colors and patterns.

**OHOM  
SELF-HEATING  
CERAMIC MUG  
& CHARGER**  
\$\$\$



**KASHWÉRE  
GRECIAN THROW**  
\$\$\$\$



## ASTRONAUT'S DELIGHT

Delivering practicality with a touch of luxury, the OGIO backpack and The North Face down jacket feature recycled materials in sleek shapes for those on-the-go. The Spector & Co. 20 oz bottle incorporates a removable, double-walled cup that keeps drinks three times hotter than a single-walled cup.

**OGIO RECYCLED  
BACKPACK**  
\$\$



**SPECTOR & CO.  
BOTTLE WITH CUP**  
\$\$



**THE NORTH FACE  
MEN'S DOWN  
JACKET**  
\$\$\$



## STELLAR STATIONERY

Reflecting its sustainability-first commitment, Prodir's medium notebook features chlorine- and acid-free paper while the pen is biodegradable. Fellow's new 10 oz lowball tumbler is crafted to accommodate a standard whiskey cube.

**PRODIR MEDIUM  
NOTEBOOK**  
\$



**PRODIR  
BIODEGRADABLE  
PEN**  
\$



**FELLOW 10 OZ  
LOWBALL  
TUMBLER**  
\$

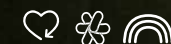




# GROOVE GIFT SETS

## BRAND SPOTLIGHT

### BEAST<sup>®</sup> \$\$-\$\$\$\$



Former NFL football legend Marshawn Lynch teamed up with the founder of NutriBullet to create the beast of blenders! With a minimalist design and easy-to-use controls, BEAST offers a collection of powerful machines and leak-proof bottles for those who are tired of sacrificing looks for quality. This collection has it all!



### FAR OUT FIND

Showcasing sleek design and cutting-edge technology, the Beast Mini Blender is a 600-watt smoothie blender and leak-proof bottle all-in-one—enabling your recipients to walk away with their drinks in the blending vessel.

#### BEAST MINI BLENDER \$\$\$



### RETRO REVIVAL

Fellow's design gurus reimagined the stovetop kettle and crafted a 12 oz tumbler with a sleek lip for enhanced aroma and flavor. The Satsuma Bento Box keeps lunch spill-proof, while Sweeter Cards wraps your message around a decadent salted caramel chocolate bar.

#### SATSUMA BENTO BOX \$



#### SWEETER CARDS CHOCOLATE \$



#### FELLOW 12 OZ WINE TUMBLER \$\$



#### FELLOW ELECTRIC KETTLE \$\$



### GET YOUR GROOVE ON

The ultimate groovy trio! Paravel's chic see-all mini vanity case slips effortlessly into the Out of the Woods tote, crafted from sustainable vegan materials. Complete the vibe with a KOBO Candle from the holiday collection, featuring multiple festive scent options.

#### OUT OF THE WOODS TOTE \$



#### PARAVEL MINI VANITY CASE \$\$\$



#### KOBO CANDLES HOLIDAY COLLECTION \$\$





# EMBRACE GIFT SETS

## BRAND SPOTLIGHT

kashwére

\$-\$\$\$\$



Give the gift of “livable luxury” with Kashwére—where cozy meets chic. Designed to feel as indulgent as cashmere but with easy care, Kashwére’s signature Chenilla yarn offers unmatched softness and comfort that’s also machine washable. From sumptuous throws and robes to travel must-haves, Kashwére brings warmth and sophistication to every space.

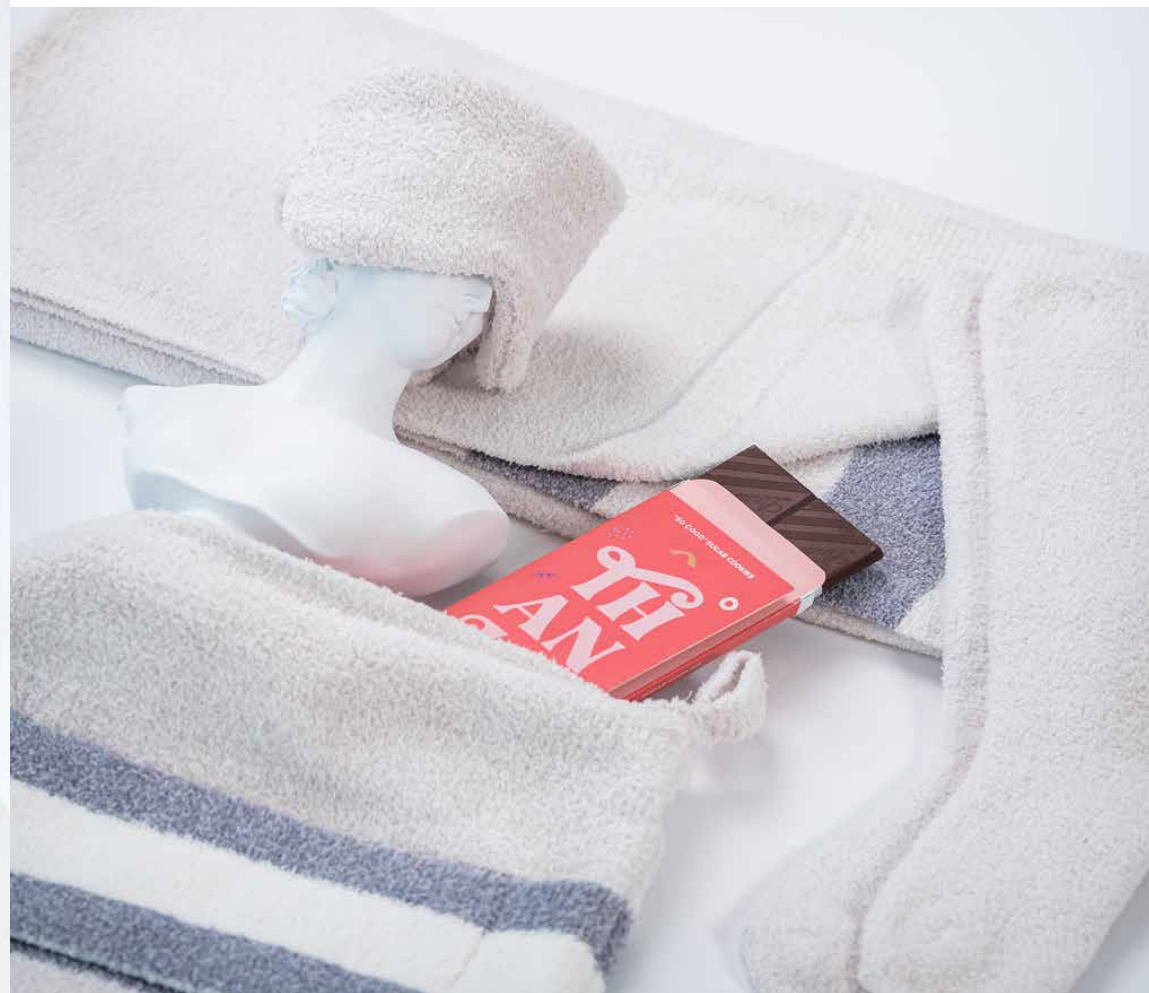
## CLOUD NINE COLLECTION

With a luxury experience that feels like a cloud, the plush Kashwére Travel Set includes a travel pouch, blanket, socks, and eye mask. The delectable Sweeter Cards customizable chocolate greeting card adds a personal touch.

**KASHWÉRE  
TRAVEL SET**  
\$\$\$



**SWEETER CARDS  
CHOCOLATE**  
\$



## HARMONY HAVEN

OHOM’s self-heating teapot set, including a strainer and two teacups, ensures any brew maintains the perfect warmth via a heating pad that doubles as a device charger. Paired with Onsen’s ultra-soft, pre-washed 100% cotton bathrobe, this gift is a cozy delight!

**OHOM SELF-HEATING  
POT SET**  
\$\$\$



**ONSEN TOWEL  
BATH ROBE**  
\$\$\$\$



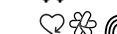
## RITUAL RETREATS

The Savor folio combines envelope and file sizes to keep reflections and plans organized, while Day Owl’s sustainable mini backpack is the ideal companion for any retreat. KOBO’s holiday candle—available with customizable packaging—complements this serene set.

**DAY OWL MINI  
DAYPACK**  
\$\$\$



**SAVOR FOLIO  
DOCUMENT  
ORGANIZER**  
\$\$



**KOBO CANDLES  
DECK THE HALLS  
TUMBLER**  
\$\$



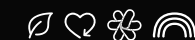


# EXHALE GIFT SETS

## BRAND SPOTLIGHT

### PARKER CLAY

\$-\$\$\$\$



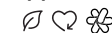
A women-owned B-Corp, Parker Clay crafts sustainable leather pieces that blend elegance with purpose. Each item supports at-risk women in Ethiopia by providing stable employment, skills training, and fair wages, empowering them to build independent lives. Choosing Parker Clay means embracing timeless luxury while making a powerful impact.



### TOTE TO TOAST

BYOB never looked so good. With a full-grain leather construction throughout, this tote can be combined with A Bar Above's gold wine opener and a bottle of wine to create a sophisticated form of holiday cheer.

**PARKER CLAY  
LEATHER WINE  
TOTE**  
\$\$



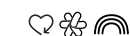
**A BAR ABOVE WINE  
OPENER**  
\$



### WARMTH & WINS

Elevate relaxation with CapAmerica's recycled knit beanie and Kashwére's throw, offering cashmere-like softness without the fuss or price tag. For a productive New Year, Poketo's project planner keeps goals on track with sections for yearly, monthly, and weekly planning.

**POKETO  
PROJECT  
PLANNER**  
\$\$



**CAPAMERICA  
PREMIUM KNIT  
POM-POM CAP**  
\$



**KASHWÉRE  
WAFFLE WEAVE  
THROW**  
\$\$\$\$



### MIXOLOGY MAGIC

Unleash anyone's inner bartender with A Bar Above's cocktail shaker set, which includes a two-piece Boston shaker, Hawthorne strainer, and a two-sided jigger with measurements. It's the ideal gift for clients who appreciate a touch of elegance in their home bars!

**A BAR ABOVE  
COCKTAIL SHAKER  
SET**  
\$\$





# THE CREATIVEMC EXPERIENCE

EMPLOYEE-OWNED | 360° SERVICES | NEW VIP PROGRAM | SWAG FOR GOOD

## EMPLOYEE OWNERSHIP

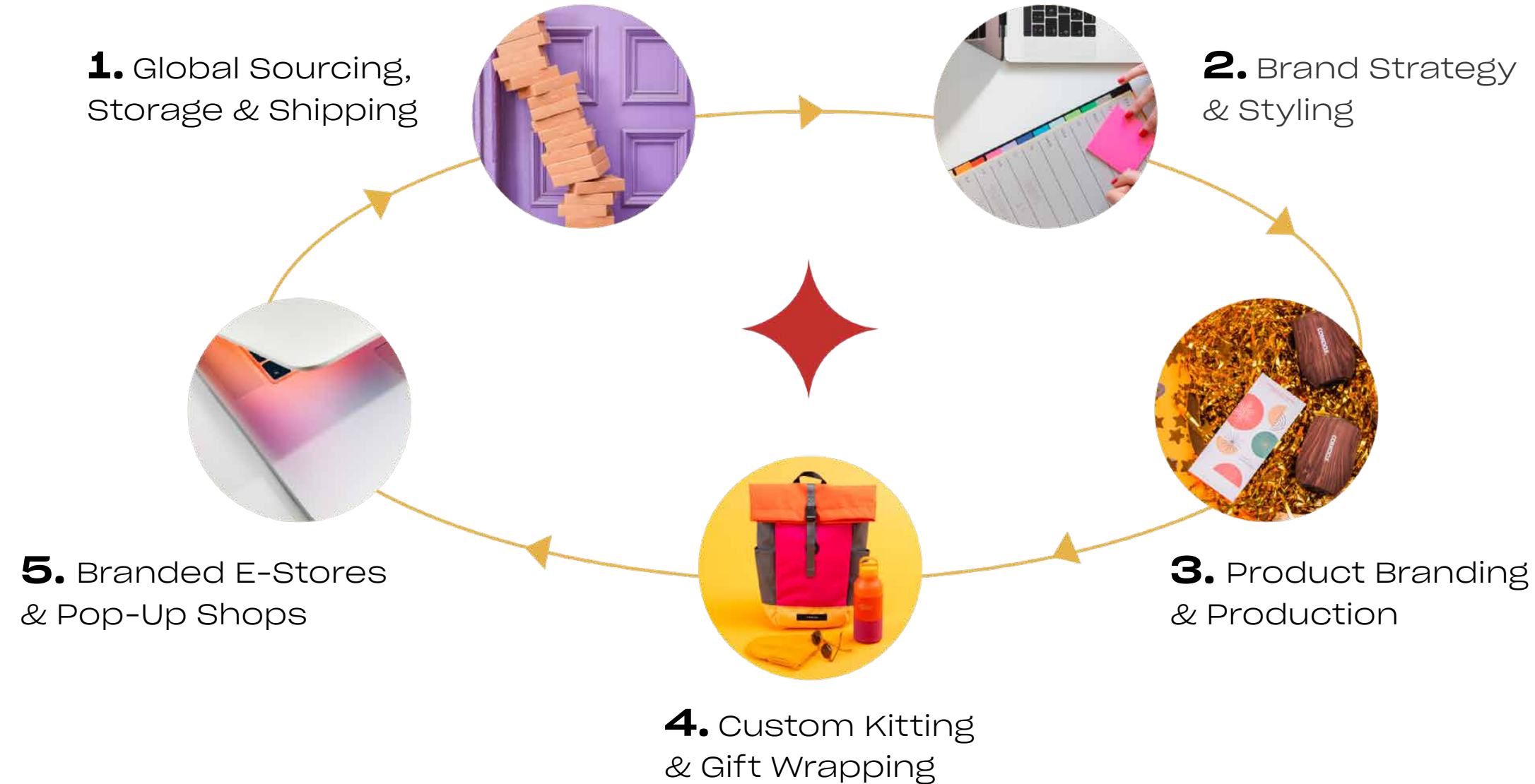
100% employee-owned as an ESOP (Employee Stock Ownership Program), our culture is defined by our diversity: we are **68% female** and **71% people of color**.

As owners, we're committed to paying it forward through our societal impact and by encouraging our clients to join us in making a difference.



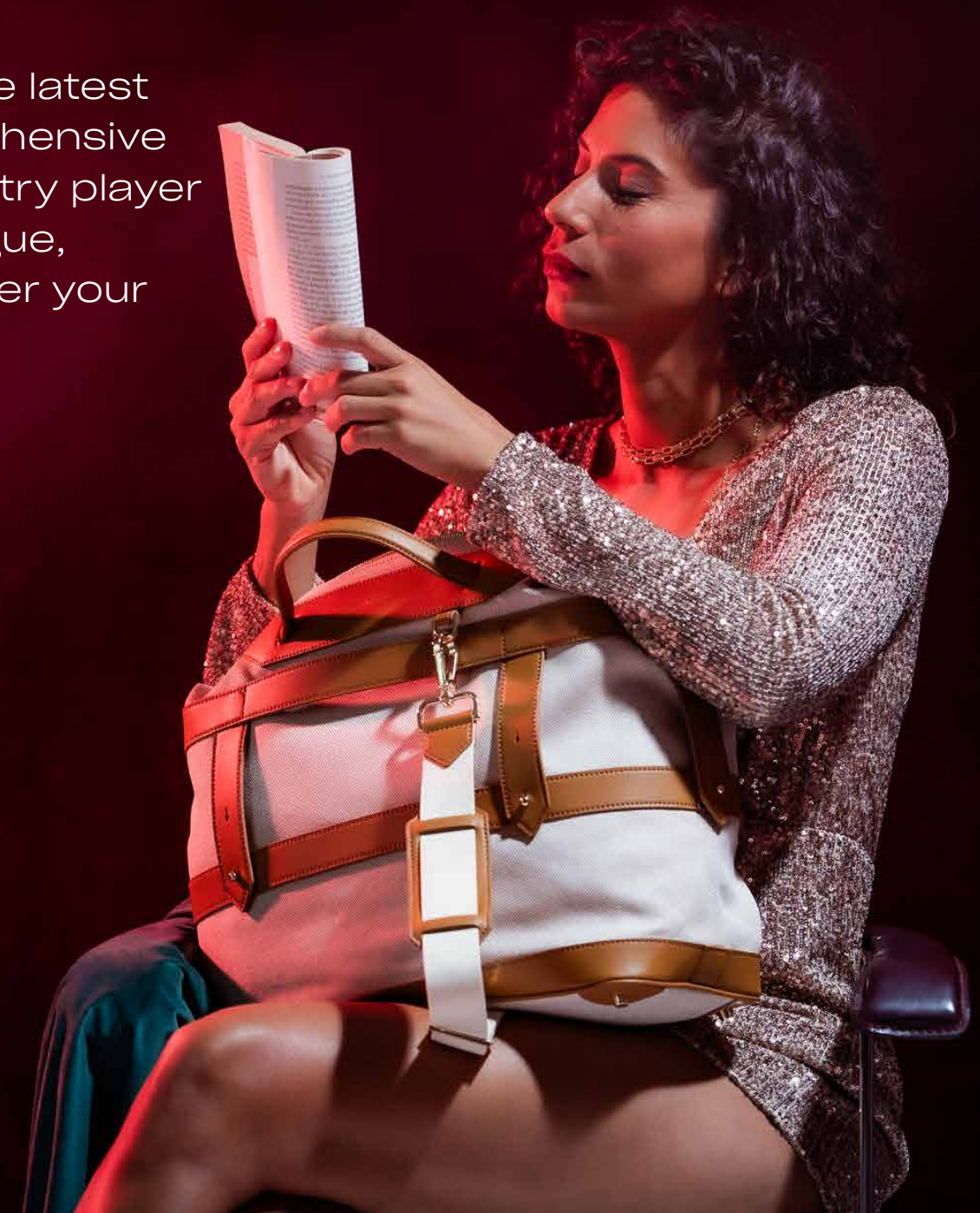


# 360° SERVICES



## Style + Global Reach

Where your brand objectives meet the latest trends is where you'll find our comprehensive Brand Styling Services. The only industry player with a sister company in Europe (Prague, Czechia), our one-stop-shop can cover your needs worldwide.





# A NEW VIP CLIENT PROGRAM!

Quarterly Swag Sample Subscription



Subscribe Now



## How It Works



### The Swag

A quarterly edit of 4-6 new products and brands representing a fresh take on trending swag. Reflecting a variety of price points and product types, each Edit will include detailed information on the brands, decoration options, special offers, and more.



### The Value

You'll pay \$89 per quarter for each edit, or \$356 per year, and only a one-quarter commitment is required at this time. Every edit will contain unique items valued at \$250 or more and your quarterly invoice will be handled however you prefer.



### The Community

As a subscriber, you'll also receive special offers from our featured brands and invitations to connect with your VIP peers. We want to hear your feedback and insights for future Edits!



## 1st Drop: Available Now!

The first Edit embodies the Future of Sustainability, featuring five meticulously crafted products that you can experience before anyone else. Valued at \$250, this limited edition collection includes three custom products—one handcrafted just for you.

**Only 50 Edits are available so secure yours today!**



# SWAG FOR GOOD COMMITMENT

## Environmental Impact



For every client eco-friendly product order, CreativeMC plants trees through our corporate partnership with One Tree Planted.



We also facilitate the donation and/or recycling of obsolete swag through our partnership with SwagCycle.



CreativeMC is Platinum Certified through the Green Business Benchmark, reflecting our planet-friendly practices throughout our day-to-day operations.

## Social Impact



From B corporations to 1% for the Planet members to vendors who contribute a portion of profits to causes like animal rescues and children's issues, our partners and our team are deeply invested in supporting their communities.

## Minority Community Impact



Through our Brand Together platform, we have reached out to and secured partnerships with over 100 businesses owned or led by underrepresented communities. We actively promote these brands across all of our platforms and in partnership with our clients, are investing in their success.



TRANSPORT  
YOUR BRAND  
WITH US

CREATIVE ♦ MC

[CREATIVEMC.COM](https://www.creativemc.com)

415.941.4000

[TEAM@CREATIVEMC.COM](mailto:TEAM@CREATIVEMC.COM)

